

**MODULAR DOLLY**

Materials Handling Equipment Series

# GN-400/900/901

## Low profile modular dolly



### INFORMATION

GN series is a modularized multi-purpose transport dolly. The platform can be expanded by connecting other modules. Due to its light weight, the dollies are easy to stack and move. Thereby it only takes a little space for storage.

Once you have placed your goods on the GN dollies, you no longer need to unload and reload them every time.

#### Multi-purpose, many uses, in one flow

- **Receive** from transport track
- **Transfer** between Locations
- **Storage** in warehouse
- **Display** at shopfront

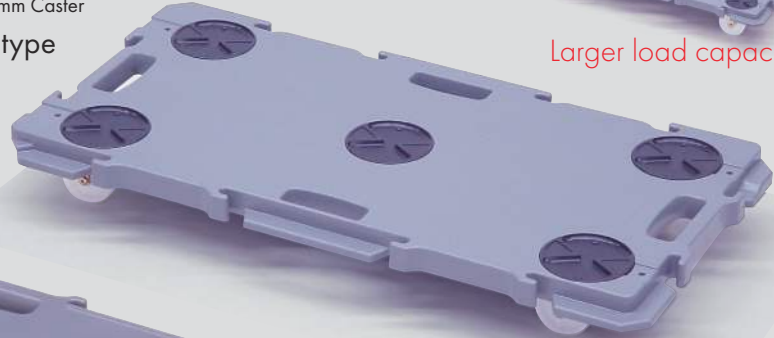
## MODULAR DOLLY

# Unique Dolly

**GN-400**  
with ø75mm Caster  
Compact type



**GN-900**  
with ø75mm Caster  
Wide type



**GN-901**  
with ø100mm Caster



Larger load capacity!



### ■ Stackable

All types are possible to stack for space-saving. Stacked dollies are movable all together without re-stacking.



### ■ Portable

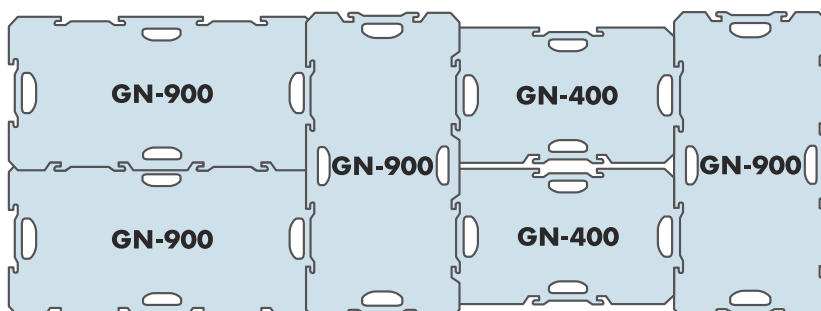
Whole of the dolly is designed as handy and easy to carry. All corners are rounded for safely handling.



### ■ Ease of Maintenance

Simple maintenance, all you need for caster replacement is a spanner.

## Platform expansion pattern



### ■ Connectable

Unique interlocking ability of GN series allows several dollies to be locked together to create a larger platform.

**Basic Specification**

	<b>GN-400</b>		<b>GN-900</b>		<b>GN-901</b>
<b>Wheel</b> (diameter/material/number)	ø75mm Nylon x4	ø75mm Rubber x4	ø75mm Nylon x5	ø75mm Rubber x5	ø100mm Nylon x5
<b>Weight</b>	3.8 kg	4.2 kg	5.5 kg	6.0 kg	6.2 kg
<b>Loading capacity</b> (uniformly distributed load)	200 kg				250 kg
<b>Material</b>	Bed: Polypropylene, Wheel: Nylon / Rubber,		Caster frame: SPCC cold rolled steel, Rubber bush: SBR (Styrene-butadiene rubber)		
<b>Temperature</b>	0 °C - 50 °C				
<b>Colour</b>	Dark Grey / Black		Dark Grey		
<b>Dimension</b> (unit: mm)					



Dark Grey (DGR)



Black (BL)

◀ Two colour variations

**Options**

**Rubber caster**

Besides solid nylon wheel for lightly moving, soft rubber wheels are also available for moving with lower noise.



Compatibility: GN-400/900  
Material: Rubber + steel

**Handles**

From a standing position you can attach the handle on the dolly and pull to move it.



Length: c.a. 800 mm  
Material: Steel



GN-400HOOKBAR



GN-400CLANBAR

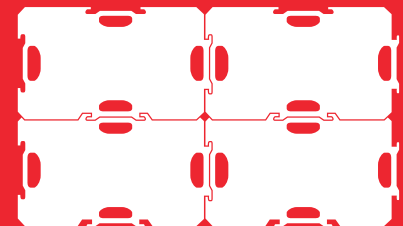
**GN-400HOOKBAR** has a hook to hitch onto the dolly. Mini caster works as a fulcrum and enables easy handling.

**GN-400CLANBAR** is designed to easily attach onto the dolly to pull and push. Simply raise up the handle to release.

**MODULAR DOLLY**

# Put wheels onto anything!

GN Series of Modular dolly allows you to easily 'put wheels' onto anything. Not only for moving containers, dollies help in maintaining safe and clean work areas by providing a simple and maneuverable platform for keeping containers off the floor. A unique feature of the dolly design is its interlocking ability, which allows several to be locked together to create a larger platform without tools. Its thought-out design allows also to be stacked for compact storage.

**STORE IN A STACK****TRANSPORT****RELOCATE****HAND-CARRY****LOCK TOGETHER****Other Products****Pipes****Joints****Casters****Automatic guided vehicles**

**CREFORM®** Technik GmbH  
 Wolfsburg Straße 10  
 D-34225 Baunatal  
 Tel. +49 (0) 5 61.47 59 67-0  
 Fax +49 (0) 5 61.47 59 67-88  
 www.creform.de  
 info@creform.de



© Copyright 2020

All rights reserved. No part of this publication may be reproduced, stored in a retrieval system, or transmitted in any form by any means, electronic, mechanical, photocopying, recording or otherwise, without the written authorisation from CREFORM Technik GmbH. This catalogue supersedes all previous editions. Technical data is subject to change at any time. This catalogue was produced with care and attention but if you find any errors or omissions, we welcome suggestions for improvement so please don't hesitate to let us know. If you would like more information about CREFORM Technik GmbH, please contact us, we will be more than happy to help.

**CREFORM®** is a registered trademark of Yazaki Kako Corporation.

www.creform.de

